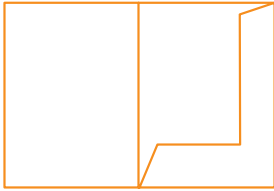


# A4 & A5 Presentation Folder Types

These are the most common types of presentation folders. Bespoke design is available with just about any design/fold/colour combination including special finishes such as UV. Bear in mind the bespoke designs will require the generation of a special cutter (re usable) that will add a one off cost of approx. £200 to the cost depending on specification. Off the shelf designs as per below use existing cutters.

Generally, orders between 25-200 are digitally printed due to the set up cost for a litho press for this product. Quality is still excellent but per unit price will be higher.

If you require templates for any of the below please contact us [westend@firstcolour.com](mailto:westend@firstcolour.com)



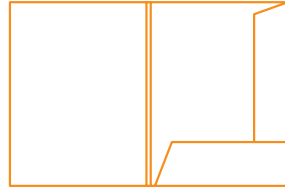
## A. Self Locking

### Folder 'A'

(fits in C4 envelope)

Folder A measures 310mm deep and 217mm wide.

It has no capacity and is an ideal general folder. It is self-locking and therefore requires no glue.



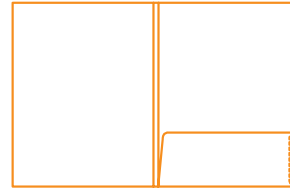
## B. Self Locking

### Folder 'B'

(does NOT fit in C4 envelope)

Folder B measures 305mm deep and 220mm wide.

It has a 6mm capacity and is useful for holding larger amounts of documents or booklets. Self-locking.



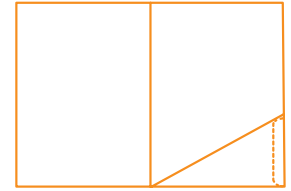
## C. One Glue Flap

### Folder 'C'

(does NOT fit in C4 envelope)

Folder C measures 303mm deep and 225mm wide.

It has a 6mm capacity but only one pocket. It has a glue assembly mechanism through one tab.



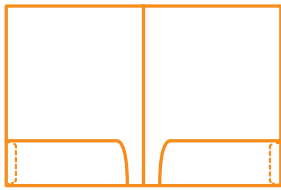
## D. One Glue Flap

### Folder 'D'

(fits in C4 envelope)

Folder D measures 305mm deep and 216mm wide.

It is unusual in having a triangular shaped pocket. It has one glue tab for assembly.



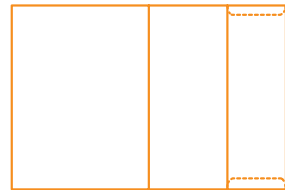
## E. Two Glue Flaps

### Folder 'E'

(does NOT fit in C4 envelope)

Folder E measures 301mm deep and 226mm wide.

It's symmetrical in design, having pockets on both sides. An ideal corporate folder for clients with lots of material.



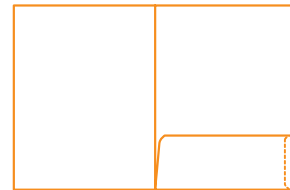
## F. Two Glue Flaps

### Folder 'F'

(fits in C4 envelope)

Folder F measures 306mm deep and 221mm wide. It has a pocket on one side, glued at the top and at the bottom.

Note that due to the design of this folder, it can be rotated so that the 95mm flap is on either side.



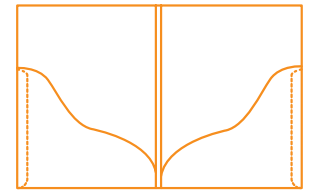
## G. One Glue Flap

### Folder 'G'

(does NOT fit in C4 envelope)

Folder G measures 305mm deep and 226mm wide.

It has no capacity and only one pocket. It has a glue assembly mechanism through one tab.

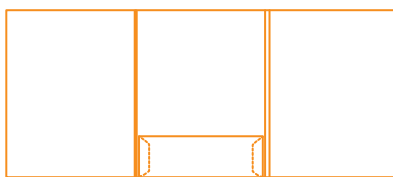


## H. Two Glue Flaps

### Folder 'H'

(does NOT fit in C4 envelope)

Folder H measures 305mm deep and 226mm wide, plus 6mm capacity. Created with double pockets this folder is perfect for holding larger amounts of documents, booklets and data sheets. The height of both pockets has been specifically designed to accommodate both landscape and portrait business card slits.

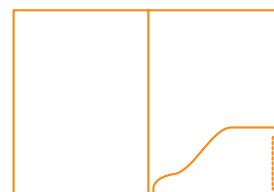


## I. Two Glue Flaps

### Folder 'I'

(fits in C4 envelope)

Folder I which offers you six printable panels and measures 305mm deep by 215mm wide with 5mm capacity. Fashioned for those of you who wish to include more company information, this is an ideal choice as a either a stand alone brochure or corporate folder.



## J. One Glue Flap

### Folder 'J'

(fits in C4 envelope)

Folder J is the curvy version of folder G. It measures 305mm deep and 215mm wide. It has no capacity and only one pocket. It has a glue assembly mechanism through one tab.